

# SAVE OUR HILLS

Located between Irvine Regional Park and Peters Canyon, these 400 acres of scenic and life-supporting hillsides are home to a number of California native plant and animal species threatened by the Irvine Company's plan to develop homes.

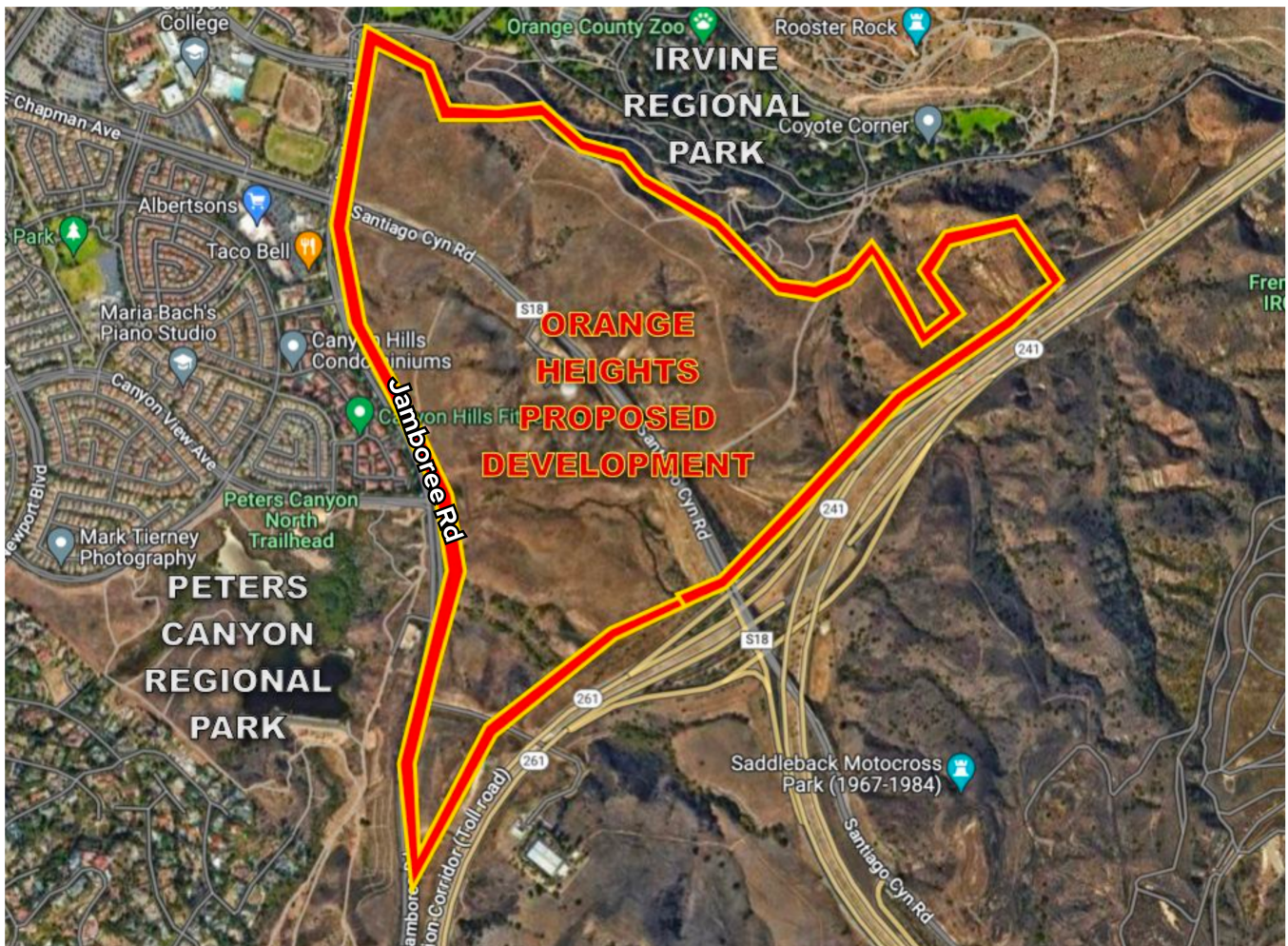
## For more information:

**Instagram:** @no\_orange\_heights

**Email:** noorangeheights@gmail.com

**Website:** [www.naturalist-for-you.org/noorangeheights](http://www.naturalist-for-you.org/noorangeheights)

Scan to **sign our petition** to stop the Irvine Company from destroying critical wildlife habitats.



Mountain lion M317 has been observed on the open space.

Photo: Juan Gonzalez



The proposed project is located in a Very High Fire Severity Zone.

Photo: @leegamer



White-tailed kites rely on the open space for food.

Photo: Tonya Fannon



Traffic congestion will worsen for all Orange residents.



The Irvine Company must complete a new EIR!

Photo: Tonya Fannon